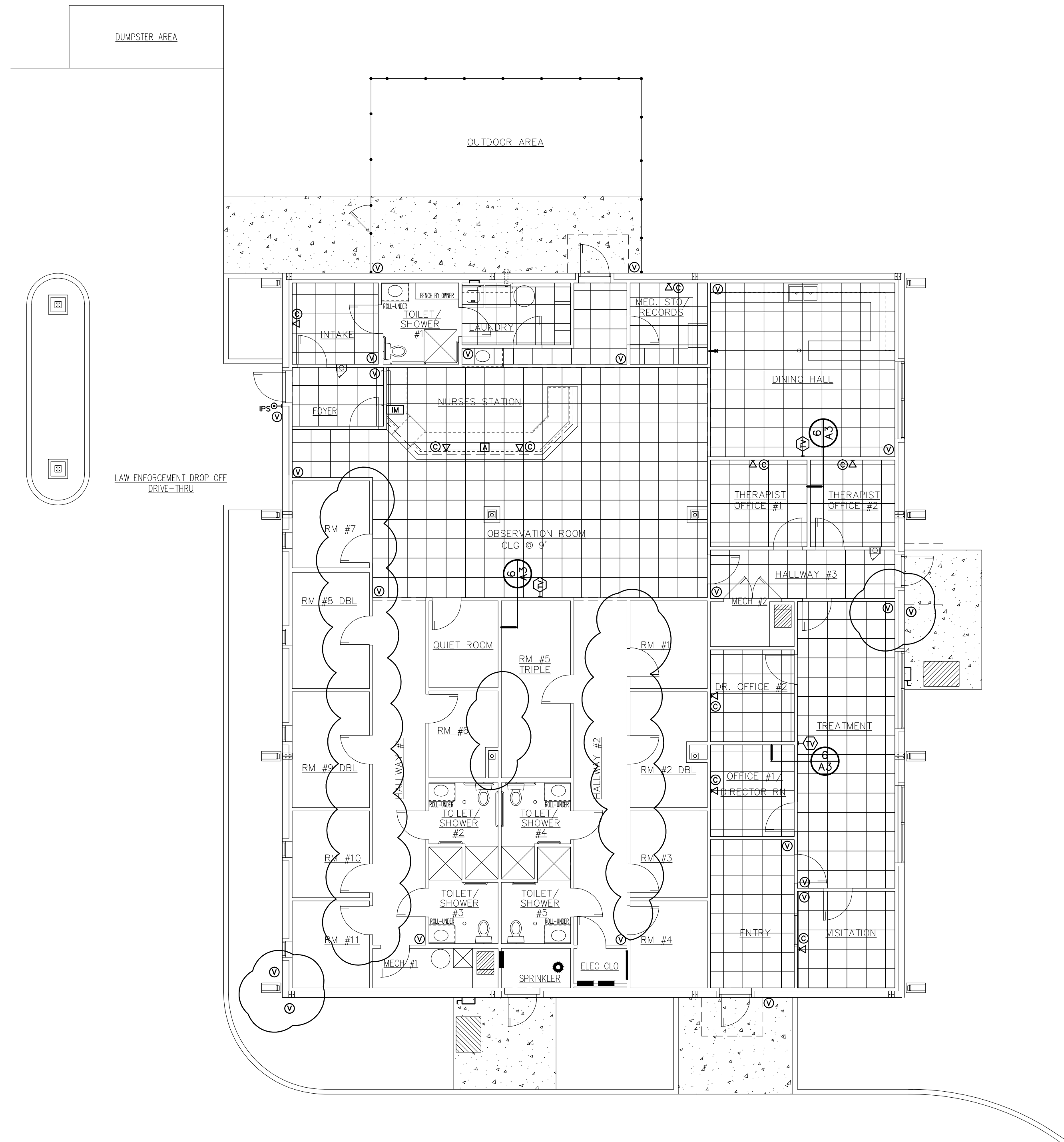


ELECTRICAL SYMBOL LEGEND			
⊕	DUPLEX RECEPTACLE	■	PANEL BOARD
⊕ _{W.P.}	DUPLEX RECEPTACLE - WATER PROOF	□	DISCONNECT SWITCH
⊕ _{G.F.}	DUPLEX RECEPTACLE - GROUND FAULT	□	JUNCTION BOX
⊕	240 V. RECEPTACLE	⊙	MOTOR
⊕	FLOOR MOUNTED RECEPTACLE	⊕	MOTOR STARTER
⊕	SINGLE POLE SWITCH - ALL ROCKER TYP	⊕	TIMER
⊕ ₃	3 WAY SWITCH	⊕	FLOOR BOX
⊕ ₄	4 WAY SWITCH	⊕	FLUORESCENT LIGHT
⊕ _L	SINGLE POLE SWITCH - LOCK TYPE	⊕	FLUORESCENT LIGHT - STRIP
⊕ _{L3}	3 WAY SWITCH - LOCK TYPE	⊕	TRACK LIGHT
⊕ _{L4}	4 WAY SWITCH - LOCK TYPE	⊕	INCANDESCENT LIGHT - CLG. SURFACE
⊕	SECURITY SYSTEM OUTLET	⊕	INCANDESCENT LIGHT - WALL
⊕	SECURITY SYSTEM CONTROL CENTER	⊕	INCANDESCENT LIGHT - VENT
⊕	MICROPHONE OUTLET	⊕	EMERGENCY LIGHT
⊕	CATS OUTLET	⊕	EXIT LIGHT
⊕	T.V. OUTLET	⊕	INTERCOM MASTER
⊕	TELEPHONE JACK	⊕	INTERCOM PAGING HORN
⊕	TELEPHONE JACK - FLOOR MOUNTED	⊕	CLG. MOUNTED INTERCOM SPEAKER
⊕	BELL / CHIME	⊕	INTERCOM PUSH TO CALL SWITCH
⊕	CHIME PUSH BUTTON	⊕	MASTER CLOCK
⊕	THERMOSTAT	⊕	CLOCK OUTLET
⊕	EXHAUST		
⊕	FIRE ALARM CONTROLLED ANNUCIATOR		
⊕	FIRE ALARM HORN & FLASHING LIGHT		
⊕	FIRE ALARM MANUAL PULL STATION		
⊕	FIRE ALARM HEAT DETECTOR		
⊕	SMOKE DETECTOR		
⊕	EMERGENCY PULL SWITCH		



DATA/COMMUNICATION PLAN
 1/8"

NOTE: - PROVIDE ALL CONDUIT AND BOXES FOR CAMERA AND MAGLOCK SYSTEMS
 - ALL LOW VOLTAGE WRING TO BE PROVIDED THIS CONTRACT
 - ALL CAMERA SYSTEM WRING AND EQUIPMENT N.I.C. - BY OWNER
 - TERMINATION AND DATA RACK N.I.C. - BY OWNER