



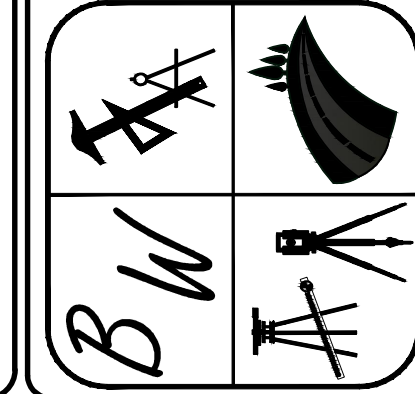
HOPE HOUSE - 1111 N. FISHER ST. JONESBORO, AR

SITE PLAN

DATE: 05/20/2021
REV:

DRAWN BY: BGW

BRANDON WOOD, P.E., P.S.
ENGINEERING & SURVEYING
112 CR 7625
BROOKLAND, AR 72417
PH: (870) 930-7504
FAX: (870) 972-0027
BWOOD@WOODENGR.COM
WWW.BWOODENGINEERING.COM



SITE SUMMARY

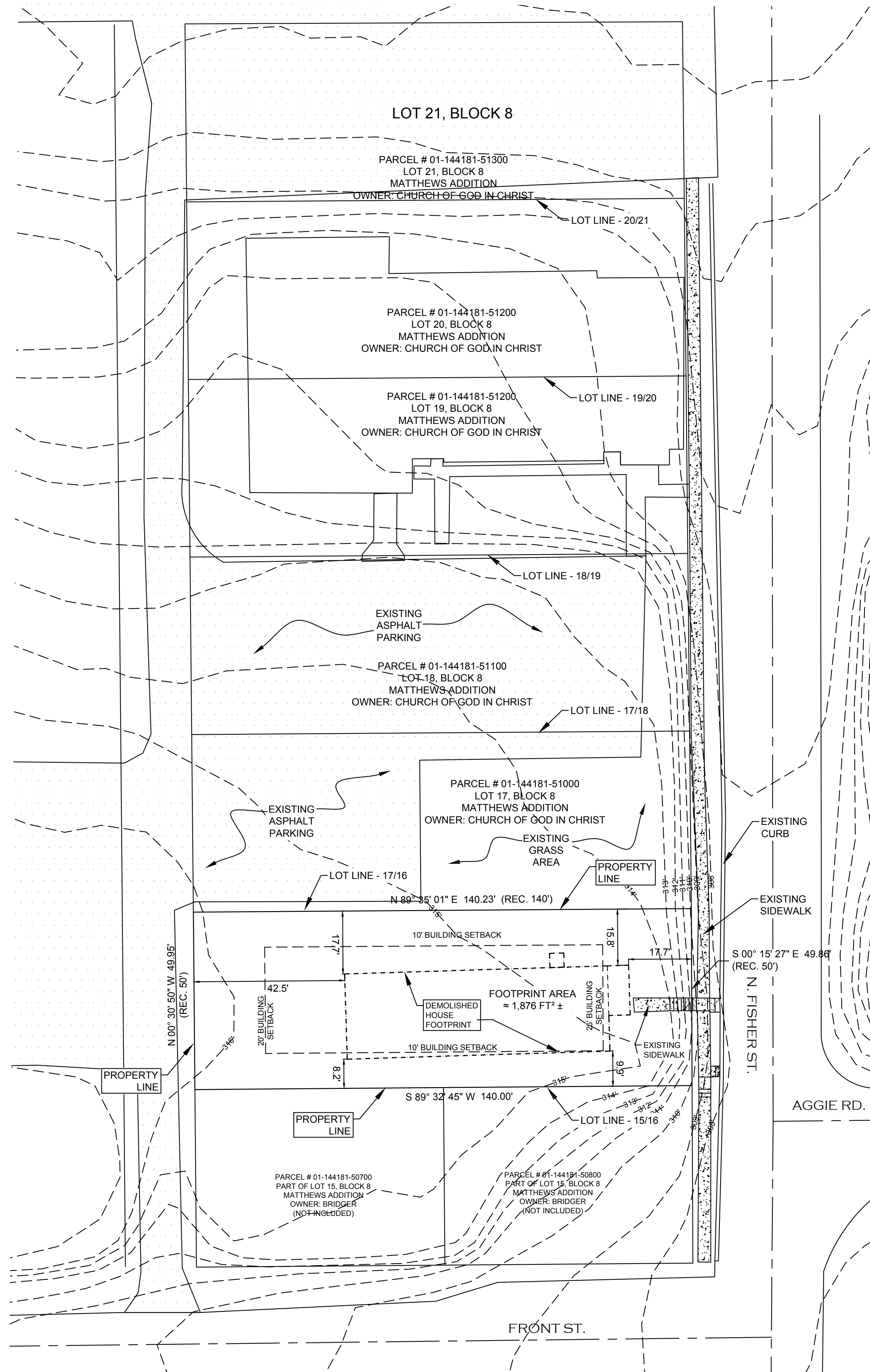
TRACT DESCRIPTION:
LOT 16 BLOCK 'B' OF MATTHEWS ADDITION (BOOK 5, PAGE 500), SECTION 08, TOWNSHIP 14 N, RANGE 4 E.

AREA:
TOTAL ACREAGE = 0.16± ACRES (6,992 SQ.FT.)
PREVIOUS IMPERVIOUS SURFACE = 1,950 SQ.FT.
PROPOSED IMPERVIOUS SURFACE (GROSS FLOOR AREA & PROPOSED SIDEWALK) = 2,734 SQ.FT.
INCREASE OF IMPERVIOUS SURFACE = 784 SQ.FT.,

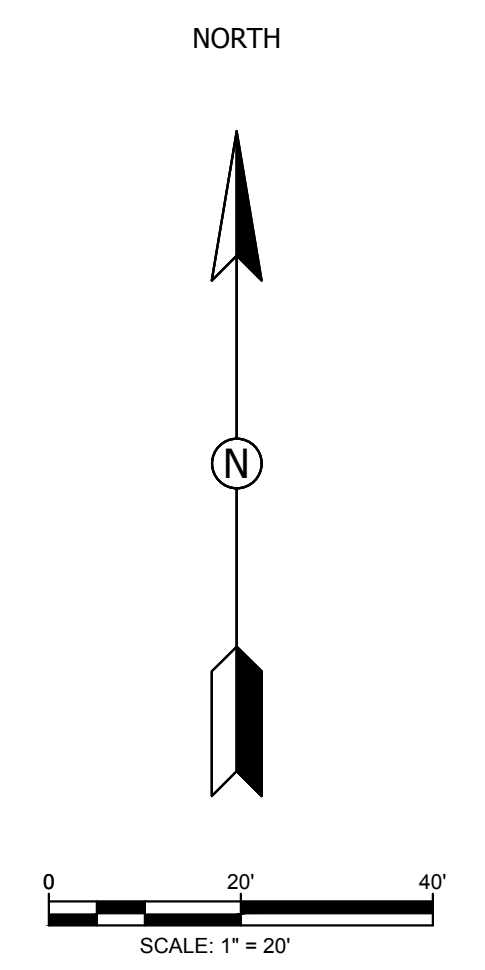
ZONING: I-1

LIGHTING:
ONLY LIGHTING TO BE INSTALLED WILL BE ATTACHED TO THE STRUCTURE. WILL BE PROVIDED BY CODE AND WILL BE DIRECTED TO PREVENT LIGHT FROM SPILLING ON TO ADJACENT PROPERTIES.

LANDSCAPING:
THIS SITE IS EXEMPT FROM LANDSCAPE ORDINANCE, SEC. 117-326, PER 2.c: IMPROVMENTS ARE LESS THAN 20% OF EXISTING FLOOR AREA. PREVIOUS AREA = 1,876 FT². PROPOSED AREA = 1,967 FT², (5% INCREASE).



EXISTING SITE CONDITIONS

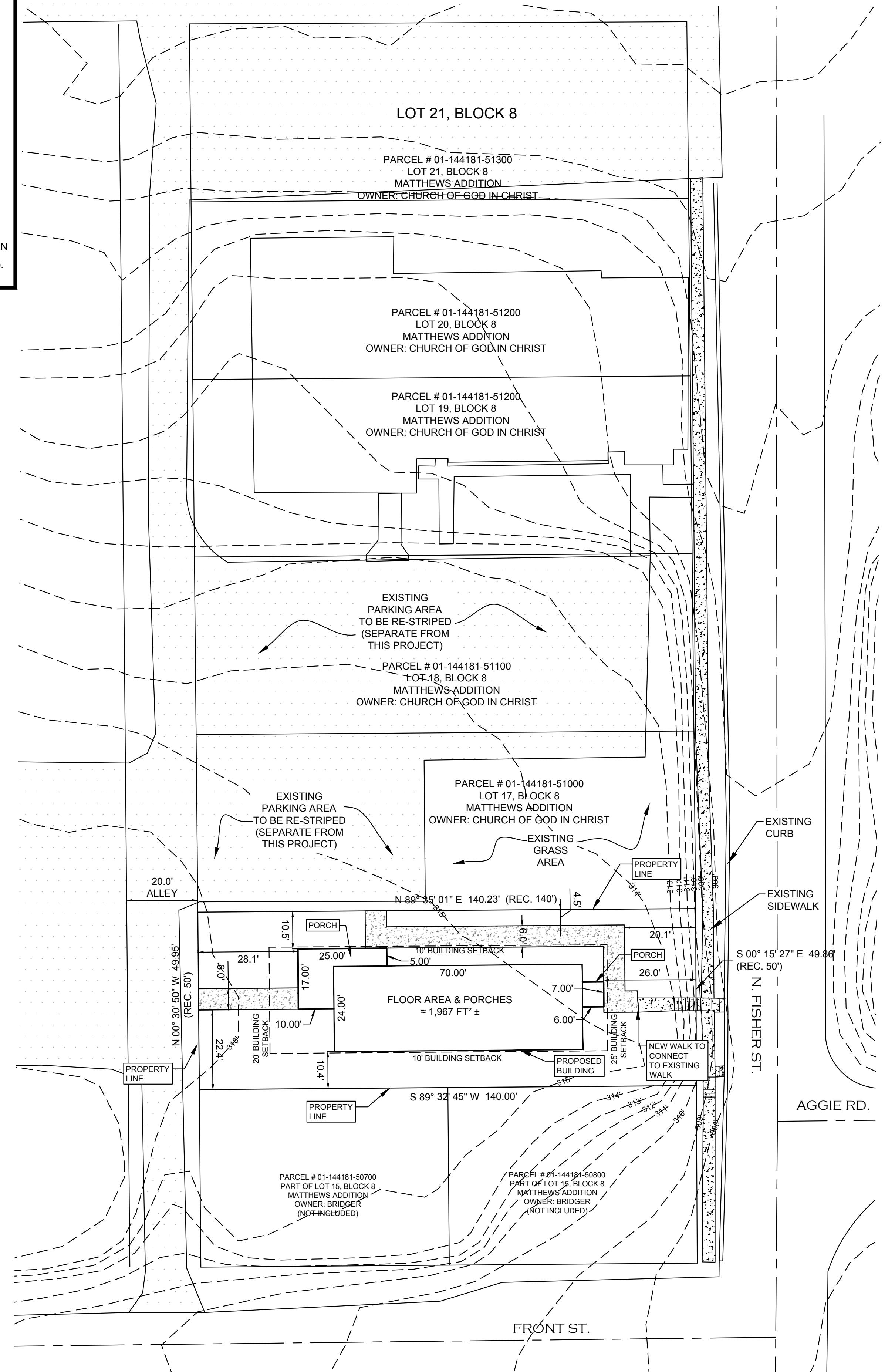


LEGEND

	ASPHALT PAVEMENT
	CONCRETE
	EXISTING CONTOUR



ARKANSAS ONE-CALL SYSTEM, INC.
1-800-482-8998 OR 811



PROPOSED SITE LAYOUT